

## A LETTER FROM THE CHAIR

---

There was a change of plan for the February evening meeting as Carol had found it difficult to find fresh ideas and demonstrators for 'Four Corners'. To compensate, **the August meeting** will involve ideas for stitching. Elizabeth and Barbara have put together **packs of scrap fabric** and each member will be given one. Discussion will follow as to how to make the best use of your fabrics. Then you take home your pack and start creating! The idea is to display the items you have made at the Christmas Party in December (some might make good Christmas presents).

Our February speaker was **Barbie Edwards**, a founder member of **Mead Quilters**, who gave a fascinating talk on her sewing life from 'City and Guilds' in Patchwork and in Embroidery through to the current day. Interesting biographical details punctuated her talk and we saw numerous pieces of work of a very high standard. Thank you Barbie for an excellent evening.

Barbie is standing down as the Refreshment co-ordinator after 3 years; **Alison King** and **Jennifer Shields** will be taking over, for which, many thanks.

A reminder, too, that Hilda is also completing her period as **Editor** of our monthly **Newsletter**. She has battled on despite her health problems which have made it difficult for her at times. We are very grateful to Hilda for 'rescuing' our Newsletter when no-one else could. Hilda has also kept us all up-to-date with things going on in the quilting world outside our small area. **Linda Cosgrove** will take over as **editor** but if any Member would like to be involved with the Newsletter, have a quiet word with Linda.

The March morning meeting was very busy. In addition to working on our own projects, more bags and cushions were completed for the hospitals.

Carol is collecting names of those who can help at Hatfield House's '**Living Crafts**' in May.

Please offer small items for display and we hope to have members demonstrating 'work in progress' on the stall with a view especially to encouraging new and younger quilters. Our Charity quilts (for **British Heart Foundation**) will be on display and we will be selling draw tickets as usual. Flyers advertising our Quilt Show in November will also be available.

A reminder that questions for our **AGM** in April should be tabled in advance. The Committee has been discussing the possibility of coach outings to quilting related events and with this in view, we will be asking members at the AGM if they would be happy for us to subsidise outings from our ample funds. We realise that this issue has been a 'hot potato' in the past but, with rising costs of hiring coaches, we would need to have the backup of our funds if we couldn't fill a coach. For those who no longer drive long distances, a coach outing can be very attractive. Please give the matter some thought in advance so that we can have a helpful discussion at the AGM.

The Agenda and last year's Minutes will be circulated electronically before the meeting. Hard copies will be available for those who are not 'on-line.'

We hope to make the AGM as interesting and lively as possible and of course there will be '**The Seasons' Challenge** items on display, no larger than 1 metre square, and the **Challenge Plate** to win!

*Valerie Pollington*

## TEA ROTA

---

March - Angela Lysandrou, Irene Heathcote, Debbie Crowe

April - Catherine Hill, Alison King, Jeannet Bowers

Our thanks to Barbie for organising the tea rota over the past few years.

## LIVING CRAFT EXHIBITION at HATFIELD HOUSE

Thursday 9 May to Sunday 12 May

This is our annual window to the rest of Hertfordshire when we display our Charity Quilt and hope to sell as many tickets as possible for our chosen charity which this year is [The British Heart Foundation](#).

Please sign up to represent [Mead](#) and sit and sell raffle tickets or demonstrate your skills.

## DUXFORD QUILT SHOW

A trip to Duxford is always a pleasure after the long winter: we all need our fix of ideas and a bit of retail therapy. But it is exhausting and although the car parking is great, the catering remains to my mind a lot to be desired. But having said that the exhibition of quilts was great.

I really enjoyed seeing the group of [1718 Silk Patchwork Coverlet](#) replica quilts which had transferred from the [Festival of Quilts](#) but there were so many quilts to see, I could not spend the time in front of each one to give it due attention.

There were lots of small journal quilts which would make ideal small projects for [Mead](#) to have a go at. They have a single theme but can be as small as 6 inches and is something everyone could have a go at. Practice makes perfect goes the old saying and I fully believe it, not everything needs to be heirloom quality but the more we practice and develop our creativity, the more we will improve in our general quilting.



*A panel of three trees at different seasons*

As always there were many opportunities for retail therapy so I always take a limited amount of money in order not to buy more than I need! However I always take a shopping list and top of my list this year was some [Bottom Line](#) thread. If you have never used it, it is the finest polyester thread used for piecing because when you press your seams it is almost invisible and adds nothing to the bulk of the seam. Having said that if your eyesight is as bad as mine, it is very difficult to unpick but I always manage it.

I love the new wool and flannel fabrics which are coming on the market and there were some lovely cushion patterns, but I think they may be too hot for me if used as a quilt.

Again, several stalls showing you how you could turn your machine into a long arm with invitations to 'have a go' and some of our members did. There is always so much to see and do and we do like to visit with old friends who we meet along the way.

*Hilda*

## ADVANCE NOTICES

### QUILTS IN THE LIBRARY

*An Exhibition By London Quilters*

At [Swiss Cottage Library](#) from [June 3 to 28](#) excluding Sundays. This is usually a fantastic exhibition from a wide range of quilters showing many different styles of patchwork and is well worth a visit.

### BERKHAMSTEAD QUILTERS EXHIBITION

[Saturday 7 September](#) from 10 am to 5 pm.  
[Northchurch Social Centre, Bell Lane, Northchurch HP40 3RD](#)

Again a local show well worth a visit.

### REGION 8 - The BIG 8 EXHIBITION

[May 6 - 8, Blackthorpe Barns, Ipswich Rd., Rougham, Bury St Edmunds, IP30 9LZ](#)

Members from [Region 7](#) of the [Quilters Guild](#) have been invited to take part and some [Mead](#) members may have pieces on show depending on the space available.

## REGION 7 REGIONAL DAY at Bourne End, Bucks

It may seem like a long way to go but members of our group managed to find their way round the M25 and M40 to find this venue. The car parking was unclear but the complex was a hive of activity, hosting a craft fair in the Library and the Quilt Show in the Community Centre.

There were 2 inspirational speakers. Firstly, **Sally Stott** talked of her great adventure with Stitchtopia and her trip to Japan, the do's and don't's of Japanese etiquette which most of us would not have known in advance, the adventure of a 1,000 mile trip on the Bullet Train from Tokyo with stops along the way to work with Japanese quilters, and the many gifts she bought away with her.

She showed a small panel of **Boro**, a Japanese method of working so that no piece of fabric is ever thrown away but is carefully darned with Sashiko stitches into the thin piece of a garment to make it wearable again.



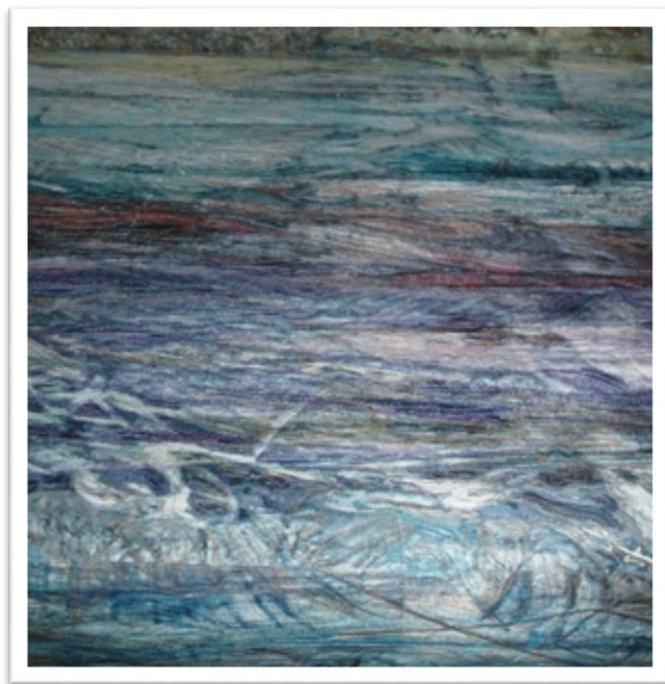
*Sally Stott's Boro panel*

After a show and tell and lunch, and more show and tell, we were lucky to have a talk from **Sandra Meech**. It was a new talk covering her arrival from Canada in the 1970's and her love of the country of the Inuit peoples in the Arctic, and her move to the Somerset levels during that terrible period when they all flooded.

She spoke of a trip to the Antarctic and her love of ice and snow and rounded up with her love of painting, photography and quilting.

It was an inspiring talk and she had brought with her some of her smaller pieces, some wonderful sketchbooks and acrylic paintings, lots of slides and she is such a good speaker that we felt we had been with her on her travels.

*Hilda*



*A panel by Sandra Meech*

### STASHBUSTING SUPER SALE

Parish Centre, St John's Road  
Hemel Hempstead, HP1 1NR

Saturday 6 April at 11 am

Arts and Crafts materials, fabric, paper,  
beads and embellishments, Stamps, Paints,  
and more.

Buy and Sell or both!

*Paula Watkins and Tina Meredith*

## A LETTER FROM THE EDITOR

As you will have seen from **Valerie's** forward at the beginning of this Newsletter, this is my last contribution to the **Mead Quilter's** Newsletter.

It has been an interesting time and I have enjoyed writing about all the events I have attended, have mastered a new computer and discovered numerous ways of getting photos from my camera into the newsletter, much more difficult with Windows than it was on my beloved Apple.

But times change and with it needs a new view on the quilt world which has become much more technology challenging for me. My interest has been always as part of The Quilters Guild, I have served on the Region 7 Committee and done my best to encourage through sharing of skills and with the children's workshops which were always a part of my brief for the Region.

But at the end of the day I feel the time has come to do all the things I would like to do, including a trip to the Netherlands organised by my daughter as reward for all the exercising I've done to improve my health and which will cover my three main interests . . . a trip to the Patchwork & Quiltdagen Show in Rijswijk, a visit to the Keukenhof Gardens and finishing up at the Delft Pottery and Maurithuis Museum.

It all sounds very exciting, so wish me luck.

*Hilda*

*FINALLY, Mead Members are invited to consider . . .*



**An Excursion to Quilts UK 2019**  
**Three Counties Showground, Malvern**  
**Saturday 18 May 2019**

Depart by PPH Coach: 8.00 am  
from Bus Stop on A6129  
by Stanborough South Lake Car Park,  
Welwyn Garden City AL8 7TB

Car parking at the Lakes is £5 for the day, by Card or Phone

Return: Leaving Malvern 4.00 pm  
trip takes about 2.5 hours

**Fare and Entry Ticket £25**  
(+£1 if you are lucky enough to be under 60!)

**Refreshments and Food available at the Showground**

Organiser & Contact  
Judith Wilson 01582 832679 [jnrwilson@btinternet.com](mailto:jnrwilson@btinternet.com)